

# 947 south gilpin street

elevate is complementing and creating quality neighborhoods with truly sustainable modern design

elevate  
ARCHITECTURE

## overview

- 5 bedroom | 4.5 bathroom
- 4557 finished square feet
- large 2-car attached garage
- 6250 sf double lot
- alley access

## location

- east washington park neighborhood
- 1 block from washington park
- 4 blocks from south gaylord street retail

## amenities

- energy star appliances
- efficient modern design
- integrated daylighting
- indoor | outdoor living
- open, flexible spaces

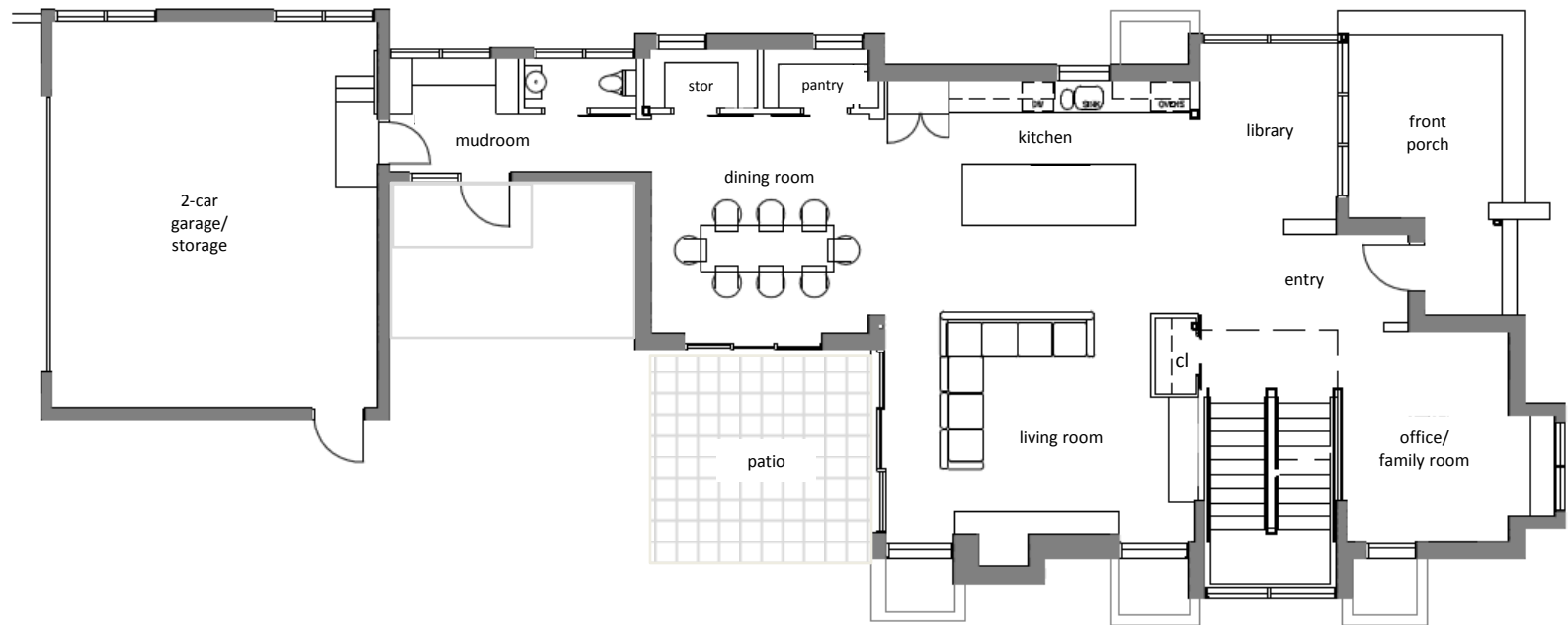


# 947 south gilpin street

elevate is complementing and creating quality neighborhoods with truly sustainable modern design



- main floor plan
  - 1728 sf, open modern plan with access to outdoor space
  - attached spacious 2-car garage with alley access



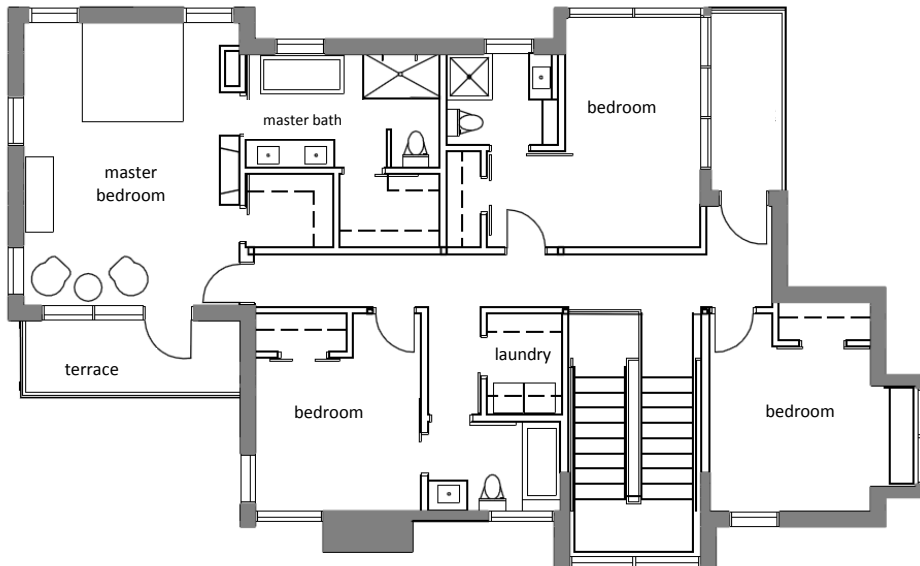
# 947 south gilpin street

elevate is complementing and creating quality neighborhoods with truly sustainable modern design



## upper floor plan

- 1587 sf, 4 bedrooms, two terraces
- open stair to main level
- direct north sunlight in main hallway



## lower floor plan

- 1242 sf finished, flexible to create **your** comfort
- open stair to main level
- natural south sunlight

